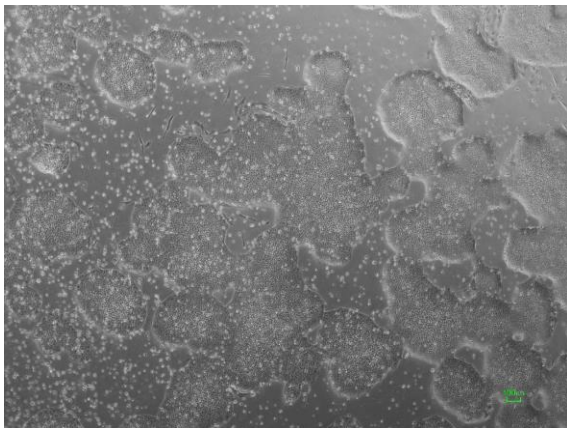
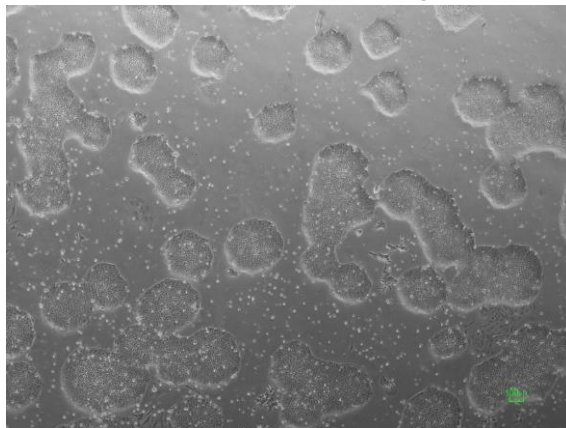


【 CiRA-jk-0033 】 Morphology of iPSC colonies

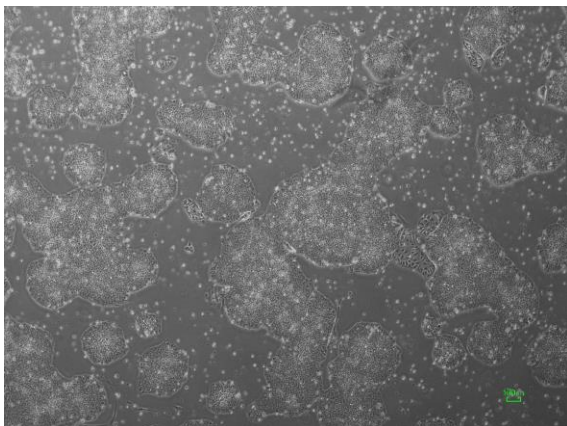
CiRA -jk-0033-A: passage-2



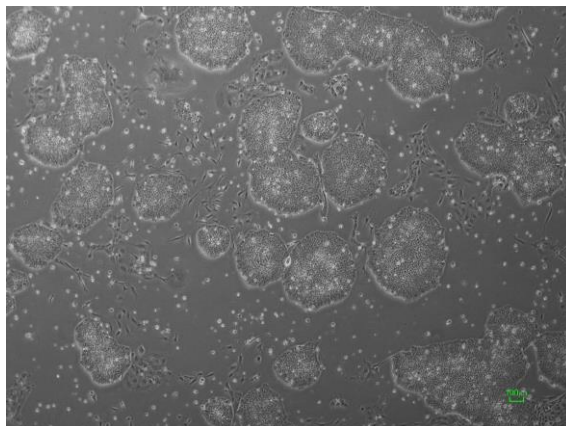
CiRA -jk-0033-B: passage-2



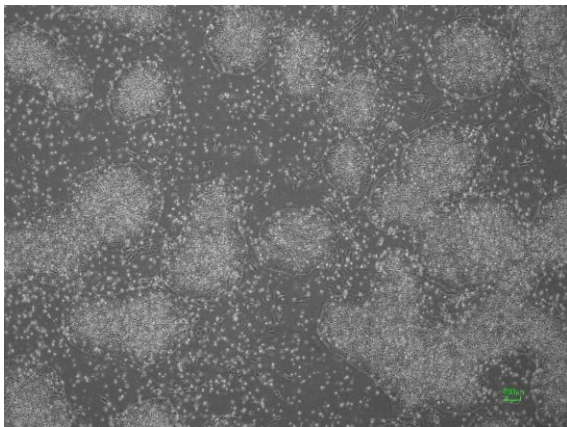
CiRA -jk-0033-C: passage-2



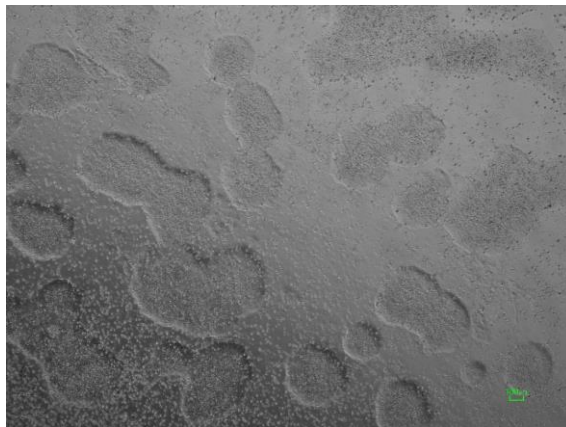
CiRA -jk-0033-D: passage-2



CiRA -jk-0033-E: passage-2



CiRA -jk-0033-F: passage-2



(All images were captured at 4x magnification)